

THE
TUCSON
FINE MINERAL
GALLERY

THE TUCSON GEM & FINE MINERAL SHOW 2024

JANUARY 26 - FEBRUARY 10



WULFENITE WITH MIMETITE | SAN FRANCISCO MINE, MEXICO | WILENSKY EXQUISITE MINERALS

CONTENTS

CONTENTS	3
WELCOME	4-5
SPECIAL EXHIBIT - UK MINING VENTURES	6-13
SPECIAL EXHIBIT - GENE MEIERAN	14-17
CHARITY FUNDRAISER	18-19
EVENT SCHEDULE 2023/24	20-23
COLLECTOR'S EDGE	24-25
DREHER CARVINGS	26-27
CRYSTAL CLASSICS	28-29
GRAEBER & HIMES	30-31
TFMG FLOORPLAN	32-33
THE FOCAL CRYSTAL	34-35
NICHOLAS STOLOWITZ FINE MINERALS	36-37
MCP	38-39
BLUECAP PRODUCTIONS	40-41
FINE ART MINERALS	42-43
WILENSKY EXQUISITE MINERALS	44-45
MUNSTEINER	46-47
RUDOLPH MINERALS	48-49
HERITAGE AUCTIONS	50-51
EARTH'S NATURAL ART	52-53
AUSROX	54-55
MINERAL MASTERPIECE	56-57
UK MINING VENTURES	58-59
SCARPELLI MOSAICI	60-61
BROTHER JOHN'S	62-63
CONTACT	64

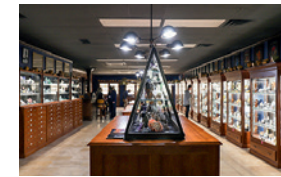


WELCOME

Welcome to the 2024 Tucson Fine Mineral Gallery Gem & Fine Mineral Show. The Tucson Fine Mineral Gallery (TFMG) is the home to some of the best known high-end mineral dealers from around the world.

The Gallery sets a new standard for the dedicated collector of fine mineral specimens and is open all-year round.

Our stellar international line-up of exhibitors for Tucson 2024 includes **Ausrox** (Australia), **BlueCap Productions** (Hawai'i, USA), **Collector's Edge** (Colorado, USA), **Crystal Classics** (England), **Dreher Carvings** (Idar-Oberstein, Germany), **Earth's Natural Art** (Tucson, USA), **Fine Art Minerals** (Peshawar, Pakistan), **Graeber & Himes** (California & Colorado, USA), **Heritage Auctions** (Dallas, USA), **MCP** (Milan, Italy),

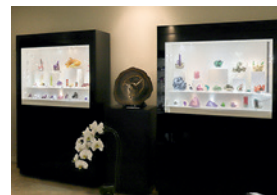


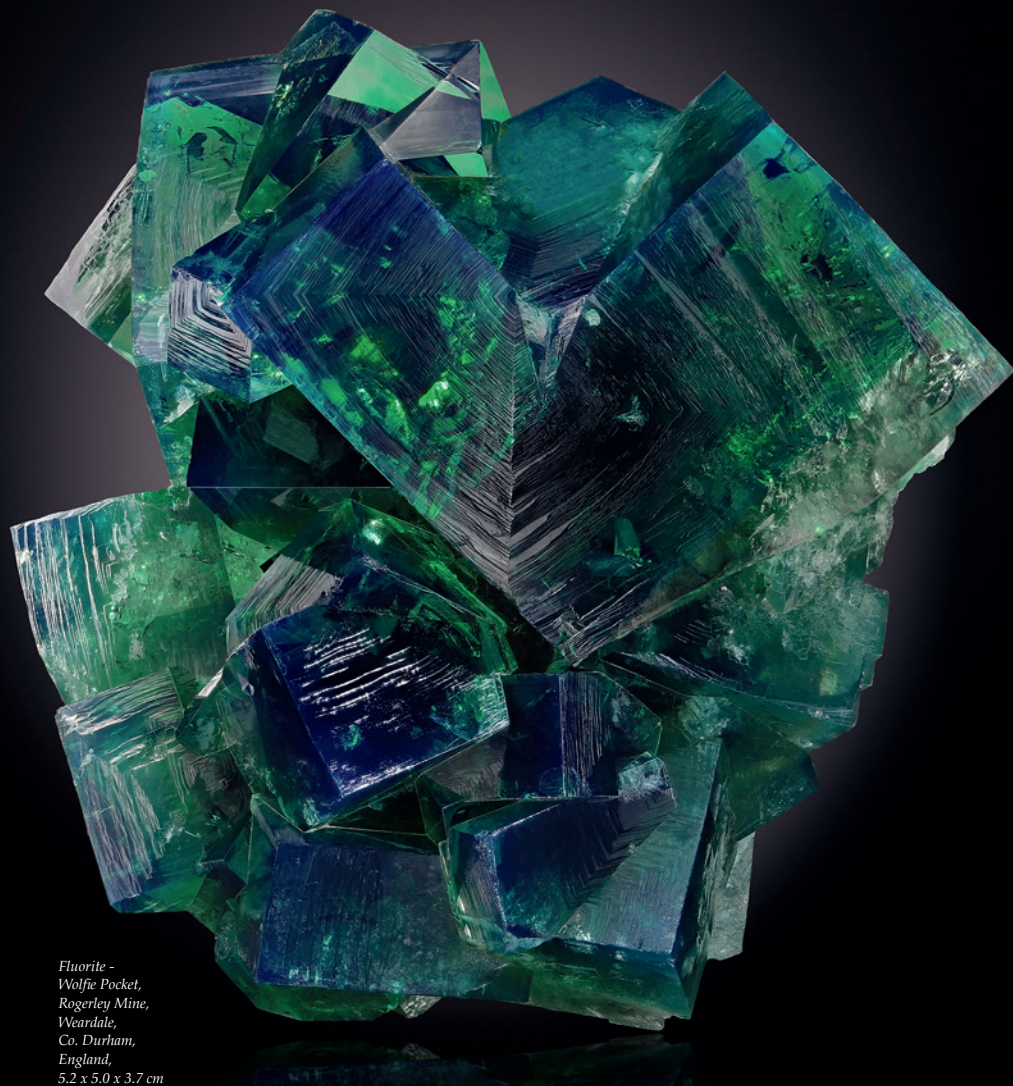
Atelier Munsteiner (Idar-Oberstein, Germany), **Mineral Masterpiece** (Dallas, USA), **Ksenia Levterova** (Ukraine), **Nicholas Stolowitz Fine Minerals** (Vermont, USA), **Rudolph Minerals** (New York, USA), **The Focal Crystal** (Houston, USA), **Tucson Todd's Gems/Mary van der aA** (Tucson, USA), **Wilensky Exquisite Minerals** (New York, USA) and **UK Mining Ventures** (England).

For this year's Tucson Gem & Fine Mineral Show we have two

special exhibits. **UK Mining Ventures** will be showcasing 50 years of specimen production from the famous Rogerley mine in England, and collector **Gene Meieran** will be showing part of his collection. On top of that, we have a host of talks from some of the biggest names in the mineral world, as well as a Charity Fundraising weekend in aid of Breast Cancer.

We look forward to welcoming you for what promises to be our best Tucson show yet!





Fluorite -
Wolfe Pocket,
Rogerley Mine,
Weardale,
Co. Durham,
England,
5.2 x 5.0 x 3.7 cm

SPECIAL EXHIBIT

UK MINING VENTURES SHOWCASE

Tucson 2024 is set to get off to a flying start at the Tucson Fine Mineral Gallery, with a very special exhibit by UK Mining Ventures during the opening three days of the show.

The English-based mining company is, of course, famous for its discoveries of world-class Fluorite from the mines in the Weardale area of County Durham, and the focus of their mouthwatering showcase will be 50 years of specimen production from the famous Rogerley mine.

This will include several cabinets in our atrium area, displaying specimens from many of the Rogerley mine pockets. These specimens have been generously loaned by former mine owners Cal Graeber and Jesse



The portal to the Rogerley Mine in County Durham, England

Fisher, as well as today's present owners, Ian and Diana Bruce.

In addition to the showcase, both pairs of owners will each be giving a talk on Sunday, January 28th, about their respective times running UK Mining Ventures. This is one not to be missed!

CAL GRAEBER/ JESSE FISHER

'The Rogerley Mine to 2017'

The Rogerley Mine is located in an abandoned limestone quarry near the town of Stanhope in the Weardale region of County Durham, northern England.

Continued on pages 8&9 >

Exposed in the quarry are several mineralized veins containing Galena, Fluorite, and other minerals, and while the region has seen considerable mining for these commodities over the past several centuries, those in the quarry appear to have attracted little notice due to their relatively low ore values.

At least one was fairly rich in crystallized

Fluorite, however, and in the early 1970s this came to the attention of local collectors Lindsay Greenbank and Mick Sutcliffe. Operating as the Cumbria Mining and Mineral Company, Lindsay and Mick worked the mine part-time for around 25 years, selling recovered specimens at various mineral shows in the UK, Europe, and occasionally in the US.

By 1996 the partners had decided for health reasons to retire from mining, and were in the process of closing the mine when this came to the attention of a group of interested collectors and dealers from California, headed by Cal Graeber and Jesse Fisher.

Lindsay and Mick generously offered to assist in transferring the operation to us, and after renegotiation of lease agreements and purchase of equipment, the American group, operating as UK Mining Ventures LLC began work at the Rogerley in the spring of 1999.

The mine had lain fallow for a few years and was in need of considerable rehabilitation, but by mid-June with the assistance of a small crew from California headed by miner Byron Weege, we were able to begin collecting and almost immediately opened what would develop into a fairly extensive network of



Lindsay Greenbank, left, and Mick Sutcliffe, right, at the Rogerley Mine, June 2000



Cal Graeber, left, Ian Jones, centre and Jesse Fisher, right, with a specimen from the Bluebirds pocket zone, extracted in August 2011

Fluorite-containing cavities, which we named 'The Black Sheep' pocket zone.

The volume of material produced from this zone, as well as the nearby West Crosscut zone discovered in 2001, was far greater than we had initially thought, and we soon realized that we had a full-blown business on our hands rather than the initially imagined

collecting adventure lasting just a couple of summers. With this in mind, we recruited a local miner, Dave Beadle, who had considerable experience working in local commercial mines. With Dave's skills at mining, we were able to turn much of the work of driving tunnel, timbering, laying rail, and fixing old equipment over to him and concentrate on

recovering, processing, and selling specimens.

Our operation at the Rogerley quickly settled into a routine of working the mine during the summer months, shipping our finds back home for cleaning during the autumn months, and sales primarily at the annual Tucson Gem and Mineral Show and on the internet, raising money

Continued on pages 10&11 >

for the next summer's mining. Although annual production could be variable, we found enough material each summer to keep the operation running for 18 years.

Through that time a number of different productive areas, or pocket zones, were encountered in the mine. The major ones include the Black Sheep zone (1999-2001), the West Crosscut zone, including the Rat Hole, Rat Tail, Corner, and Dodgy Bugger pockets (2001-2009), the Jewel Box/Blue Bell zone (2007 - 2010), Penny's Pocket, including the Weardale Giant (2011-2012), and the Bluebird's zones #1 and #2 (2013-2016).

During the summer of 2010 our miner and head collector Byron sadly passed away from a cancer. A local collector friend, Ian Jones, who was already a frequent visitor at the mine volunteered his services and became a member of the team at both the mine



Ian Bruce, second from left, with his daughter Verity, far left, his son Joe, second from right, and wife Diana, far right

and at the annual Tucson show for the remainder of our tenure.

By the summer of 2016 a number of issues, including Dave's retirement, the loss of access to the explosives store we were using at the nearby Heights Quarry, and ever increasing (and costly) operating requirements mandated by the Mines Inspectorate were making it difficult to operate the mine from the remove of California. With this in mind, we made the decision to pass it along to Ian Bruce, who had the ambition and resources to continue the operation.

IAN AND DIANA BRUCE

'Fluorite Mining from 2017'

Following the acquisition by UK Mining Ventures Ltd in 2017, many months were spent upgrading the underground workings of the Rogerley mine with new roof support, secondary emergency egress routes, ventilation systems and improvements to mine drainage.

Continuous roof support is required due to the weak bedding and joint planes within the Great Limestone which forms the overburden.



Ian Bruce, right, with specimen miner Mike Wood, left, with an incredible large Fluorite extracted in 2022

Good ventilation is also necessary because, although the mine is developed solely within sedimentary rock, radon gas enters the mine workings via deep fissures which connect to the underlying Weardale granite.

When development of

the main adit resumed, it continued to follow the Greenbank vein in a NNW direction. During this operation a new richly mineralised flat was encountered in January 2018 and named the Wolfie pet lurcher.

The summer of 2017

also saw a new surface mining operation of the Sutcliffe vein, which was to become the Diana Maria mine producing some of the world's finest mineral specimens.

During initial work, an extensive collapsed mineralised flat was

Continued on pages 12&13 >



Fluorite -
50 Year Pocket,
Rogerley Mine,
Weardale,
Co. Durham,
England

excavated just within the existing Rogerley quarry eastern face, throughout which many spectacular finds were made. Fluorite specimens were recovered from five major pockets, each with their own particular characteristics. These were named the Graeber Jones, Snowstorm, Pavel's, Emerald Peaks and Green Hill pockets.

January 2018 heralded the discovery of the Queen of Green pocket, which yielded magnificent gemmy emerald green Fluorites with crystals of wonderful perfection.

In May 2018 work began on the Diana Maria mine itself, first by installing a new heavy duty, rock covered portal followed by the commencement of tunnelling operations. Many of the pockets that went on to be found established new standards for the quality of Fluorite from Weardale in terms of colour, colour zoning, clarity, crystal habit and intensity of natural daylight fluorescence.



Fluorite with Quartz - Druzy Dreams Pocket, Rogerley Mine, Weardale, Co. Durham, England

Having focused resources in Diana Maria mine for the past three years, considerable advances were made in its development, including entering the intersection of the Greenbank and Sutcliffe veins.

Three new pockets were named and exploited under the banner of Rogerley mine, all within the Greenbank South Vein, yet currently extracted via Diana Maria mine.

Once both mines have joined, Rogerley will be attributed to Greenbank Vein and Diana Maria to Sutcliffe and River Catcher.

The Rogerley mine complex has produced some of the world's finest Fluorite specimens over the last 50 years and we hope to continue this adventure as long as the vein continues and the mining costs don't kill the project.

Amethyst
with Calcite -
Artigas,
Artigas Department,
Uruguay

PHOTOS: J Scovill



SPECIAL EXHIBIT

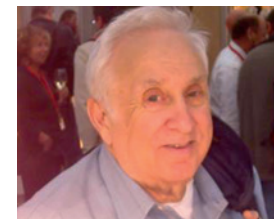
GENE MEIERAN AMETHYST AND CALCITE COLLECTION

On Friday, February 2, Dr Gene Meieran will be showcasing a never-before-seen exhibit of his amazing Uruguayan Amethyst collection.

Including many geode specimens, which often include natural Calcite crystals that have grown inside of the geodes, these are truly wonderful examples of nature's art at its best.

Accompanying Meieran's presentation will be a choice selection of the best of these specimens from his personal collection which will be on display throughout the Gallery.

As an Honorary Member of the Artigas Collecting Consortium (a group responsible for managing these specimens that come from the Artigas region in Uruguay), Meieran has first-right



Gene Meieran

of refusal to some of the best pieces discovered. And with his nuanced and critical eye for aesthetics, Meieran has cultivated an extremely high-end collection of these fine sculptural pieces.

Meieran is a world-renowned mineral collector, perhaps best known for his incredible collection of fine, pegmatite and gem minerals.

Like many of us, Meieran started collecting rocks at the early age of eight. Throughout his life, he continued this collecting as his fascination with

crystals and earth sciences blossomed. This fascination guided his professional career as he became a Materials Scientist with a Doctor of Science degree from M.I.T. in Cambridge, Massachusetts.

Whilst attending school there, Meieran spent a lot of time at the Mineralogical and Geological Museum at Harvard University where he met, and became friends with then Harvard Curator Cliff Frondel.

This association with Frondel, and Meieran's subsequent involvement with the decision to launch Apollo 12 in November, 1969, influenced another collecting fascination within Meieran, who shares a passion for all things related to the

Continued on page 16&17 >



Apollo program - but that's a different story.

Through Meieran's association with Frondel, he was exposed to a greater variety of mineral species than he ever had before, pushing him towards refining his collecting technique from 'collect everything' towards specimen collecting by species.

This method continued until one fateful day, when he eventually met

mineral aficionado Wayne Thompson of Phoenix, Arizona. Thompson and Meieran formed a tight friendship and Thompson's influence led Meieran to further refine his collecting focus on pegmatite minerals and gem minerals - the classification for which he is most well-known.

As Meieran continued to develop his collecting style, he knew that one of the best ways to

become a knowledgeable collector was to expose himself to as many minerals as possible.

On his annual trips to Tucson, Meieran would always be sure to visit mineral dealer Daniel Trinchillo so that he could enjoy and study the fantastic specimens on display at the Fine Minerals International house located next door to the Tucson Fine Mineral Gallery.

During one of those visits, Thompson informed Meieran that he had to look at a fantastic Amethyst specimen that Trinchillo had in the back of the house. Upon viewing this large plate of Amethyst with embedded Calcite candles growing up from the field of purple, Meieran was smitten.

His analytical scientific mind - which served him well for his 47- year stint

at Intel - was fascinated by the idea that a soft, fragile mineral like Calcite could somehow be found inside a high melting temperature mineral like Amethyst and, alternatively, be coated by it. The physics of this combination teased his scientific mind while the pure aesthetics of the piece satisfied his love of beauty.

He decided, on the spot, that he wanted

the specimen. Trinchillo arranged to have it trimmed and delivered to Meieran, and that piece, which he nicknamed the Candelabra, became the first of many in his collection of Amethyst/ Calcite specimens.

On February 2 many pieces from Meieran's amazing collection will go on display for the first time ever, right here at the Tucson Fine Mineral Gallery.



CHARITY FUNDRAISER

Starting on Friday, February 2, the Tucson Fine Mineral Gallery will be holding a Charity Fundraising weekend to raise funds for the fight against Breast Cancer.

The primary money raiser for the weekend will be an auction with Heritage Auctioneers beginning at 2pm on Friday. The auction will feature mineral specimens that have kindly been donated by many of the dealers located in the Tucson Fine Mineral Gallery, so expect some top-class pieces!

Our second event for the weekend is our 'Ladies Day,' which proved to be a big success last year.

The event, which costs \$50 per person, includes a cream tea and champagne reception, as well as two talks in the Conference Room.

The first talk at 12pm



Diana Atieno

is from Diana Atieno, who works in the mining industry in Africa. Diana will discuss women in mining - the challenges, the rewards, and the adventures. She will also explain the overall extractive process of gemstones and how more women can get involved.

At 2pm, well-known mineral collector Gail Spann will entertain us with a talk about her favorite minerals from her collection.

Gail and her husband Jim both share a strong passion for minerals, mineral collecting, and



Gail Spann

mineral people. What started as a simple hobby 10 years ago has transformed their home into a live-in museum. Gail has also been through her own breast cancer journey, so the charity fundraiser is a cause close to her heart.

In addition to all this, artist Tama Higuchi, who currently works for Heritage Auctions, will be designing a set of pink mineral wings for the event. These wings will be on display on the Gallery exterior and will provide a perfect photo opportunity!



Federico Barlocher, pictured right, will be giving a talk on 'Rubies from Mogok' on Tuesday, January 30

EVENT SCHEDULE 2023/24

■ November 17-19, 2023

THANKSGIVING SHOWCASE

■ Friday, January 26, 2024

UK MINING VENTURES SHOWCASE

■ Saturday, January 27

UK MINING VENTURES SHOWCASE

■ Sunday, January 28

UK MINING VENTURES SHOWCASE

11AM - CAL GRAEBER/JESSE FISHER TALK

'The Rogerley Mine to 2017'

2PM - IAN AND DIANA BRUCE TALK

'Fluorite Mining from 2017'

■ Monday, January 29

11AM - PETER MEGAW TALK

'Silver Mineralogy of Mexico'

2PM - PATRICK DREHER TALK

'Carving The Invisible'



Patrick Dreher



Christoph Keilmann

■ Tuesday, January 30

11AM - FEDERICO BARLOCHER TALK

'Rubies from Mogok (Myanmar/Burma)'

2PM - VICTOR TUZLUKOV TALK

'15 years of Artistic Gemcutting: from the Philosophical Stone to the World Heritage'

■ Wednesday, January 31

2PM - DAVID MUSTART TALK

'Unravelling Conditions of Crystallization of Native Gold'

■ Thursday, February 1

11AM - LES PRESMYK TALK

'The History of The Tucson Gem and Mineral Show'

2PM - CHRISTOPH KEILMANN TALK

'Transforming Mineral Collecting: From Passion to Market, Knowledge Transfer, and the future Role of the Munich Show'

■ Friday, February 2

2PM - AUCTION WITH HERITAGE AUCTIONEERS IN AID OF BREAST CANCER

3.30PM - GENE MEIERAN TALK

'Amethyst and Calcite Treasures'

5PM - HARVARD EVENING

■ Saturday, February 3

2PM - GENE MEIERAN TALK

'The Value of Museums'

6.30PM - 9.30PM - GALA EVENING (INVITE ONLY)

Continued on pages 22&23 >

Gail Spann will be giving a talk about her favourite minerals for 'Ladies Day' on Sunday, February 4



EVENT SCHEDULE 2023/24

■ Sunday, February 4

10.30AM - 3.30PM - LADIES DAY

12PM - DIANA ATIENO TALK

'Women in Mining'

2PM - GAIL SPANN TALK

'Gail Spann's Mineral Favourites'

6.30PM - 8PM - AMERICAN MINERAL HERITAGE AWARD

■ Monday, February 5

11AM - GEOFF KRASNOV/NEAL LUPPESCU TALK

'Perspectives of Historical and Current Collecting Strategies of Tsumeb'

2PM - MALCOLM SOUTHWOOD/RAQUEL ALONSO-PEREZ/FRANK KEUTSCH TALK

'Tsumeb: Putting the Pinch and Feinglos Collections to Work'



Neal Lupescu



Raquel Alonso-Perez



Tama Higuchi-Roos

■ Tuesday, February 6

10AM - 6PM - POP UP SHOW PAULA CREVOSHAY

2PM - PAULA CREVOSHAY TALK

'Crevoshay - Wear the Light. Live in Beauty'

■ Wednesday, February 7

11AM - MARK HAY TALK

'Vanadinite - Field Collecting in Western Arizona'

■ Friday, February 9

2PM - TAMA HIGUCHI-ROOS TALK

'Spotlights from the Young Mineral Collectors'

6.30PM - 9PM - YOUNG MINERAL COLLECTORS -

SPONSORED BY STUART WILENSKY/HERITAGE AUCTIONS/BRYAN LEES

■ Saturday, February 10

FINAL DAY OF 'TUCSON 2024'

■ May 10-12

SPRING SHOWCASE



Smoky Quartz with
Microcline var.
Amazonite -
Smoky Hawk claim,
Crystal Peak,
Teller County,
Colorado, USA.

PHOTOS: J. Scovil

GALLERY ①

COLLECTOR'S EDGE MINERALS, INC. | SINCE 1984

The Collector's Edge is a world leader in mining, sourcing, and preparing superb quality mineral specimens. A passion to find great mineral specimens inspires the Collector's Edge to explore the world.

This company uses award winning specimen collecting techniques as it works with mines and mining companies on six continents. Since 1984, the

companies have operated or explored more than 100 worldwide localities.

The Collector's Edge maintains a world-class mineral preparation facility at our home office in Golden, Colorado. Our advanced laboratory techniques bring out the full beauty of the mineral specimens we source from around the globe.

Acquisition of superb quality specimens is

a primary focus of the Collector's Edge. Museums and private collectors have come to rely on the Collector's Edge to uncover fine mineral specimens for their collections. Through time, we build solid relationships that collectors can depend upon. This long-term support from Collector's Edge assists our customers in building the very finest mineral collections.

We will be offering our latest discoveries EXCLUSIVELY at our beautiful showroom in the Tucson Fine Mineral Gallery!

CONTACT

Website: collectorsedge.com

Phone: 303 278 9724

Email: minerals@collectorsedge.com

Instagram: [@collectorsedgeminerals](https://www.instagram.com/collectorsedgeminerals)

Facebook: [/collectorsedgeminerals](https://www.facebook.com/collectorsedgeminerals)



Gold - Colorado Quartz Mine, Whitlock District, Mariposa Co., California, 8.5 cm



Bryan K. Lees, President and Founder, Collector's Edge Minerals Inc



"Playtime", Heated Agate Fish (Brazil), 160 x 143 x 45 mm. Fins and mounting pieces are made of 18k gold and "Coral" carved from Jasper and the base from Rock Crystal. "Starfish" made of 18k gold (the template for this was carved in agate and then cast in gold)

GALLERY ②



The ability to see the unseeable is only the first, of many qualities, that sets fifth-generation gemstone carver Patrick Dreher apart from others.

His uncanny ability to hold a stone, rotate it and peer into its depths while picturing how the stone can come alive into an incredibly realistic representation of an animal is an ability that has been honed over many, many years in a tradition that has been passed down through many generations.

Jeweler to the Czars, Karl Fabergé, recognized this ability from the Dreher family in the late 1800s and used the family as one of his anonymous artisans in creating works of arts to be presented to the Russian royal family and they could use as gifts.



Patrick Dreher

From father to son, this skill has been passed down through the generations within the Dreher family with each generation adding their own little customizations to move the art forward from the previous generation.



Amethyst "Mouse" - 44 x 70 x 52 mm

But while being able to read the stone is the first step, it certainly is not the last. Patrick has mastered the many techniques required to take that vision all the way to its complete, ultimate fulfillment creating masterpieces that freeze time and make a Dreher carving a much sought after work of art from collectors to dealers, museums and more.

From ironic expressions to natural motions frozen in time to incredible details that beg for physical contact, the Dreher legacy is alive and thriving in the insurmountable work of Dreher Carvings.

CONTACT

Website: dreher-carvings.com

Phone: +49 6781 33793

Email: pd.carvings@gmail.com

Instagram: [@p.dreher](https://www.instagram.com/p.dreher)

Facebook: Patrick Dreher



Beryl var. Heliodor - Volodarsk-Volynskii, Zhytomyr Oblast', Ukraine

GALLERY ③

CRYSTAL CLASSICS

Founded 30 years ago by Ian Bruce, Crystal Classics Fine Minerals is a company which rapidly became one of the most respected and pioneering dealerships of high-end mineral specimens in the world.

Right from the beginning, Ian's vision of Crystal Classics was of a company operating at the very highest level and, as its name implies, dealing in classic and historic

mineral specimens.

With a constant presence at all the important domestic and international mineral shows, Crystal Classics' reputation was soon established, supplying top private collectors and the world's major museums.

The flagship Crystal Classics showroom in the Tucson Fine Mineral Gallery is famous worldwide.

Over 15,000 specimens

from all over the world are on display in this spectacular showroom, which in itself, features an inventory that is in excess of most Natural History Museums worldwide. Stock is constantly changing with the addition of new finds from worldwide specimen mining projects and our latest collection acquisitions.

The showroom is like no other and is open during normal business hours and weekends by appointment (*please call +1 520 542 3130 to arrange your visit*).

CONTACT

Website: crystalclassics.co.uk

Phone: +1 520 542 3130

Email: orders@crystalclassics.co.uk

Instagram: [@crystal.classics](https://www.instagram.com/crystal.classics)

Facebook: [/crystal.classics.fine.minerals](https://www.facebook.com/crystal.classics.fine.minerals)



Elbaite (Tourmaline) on Quartz - Brazil



Ian and Diana Bruce



Rhodochrosite -
Wutong
Rhodochrosite Mine,
Guangxi Zhuang
Autonomous
Region, China

GALLERY 4

GRAEBER & HIMES

Graeber & Himes feature choice minerals for knowledgeable collectors. You'll find many rarities and locality pieces among the colorful 'mineral art' specimens.

Cal and Leonard both operate specimen preparation labs and provide appraisal services. They invite customers to their California and Colorado home showrooms by appointment. They

especially love getting dirty prospecting and in mines; Leonard began his business collecting wavellite in Arkansas and Cal developed the Rogerley Mine in England.

Cal and Leonard are the longest-lasting mineral partnership currently in business. That began when Florida-based Leonard needed help with the AFMS show in San Diego and Cal had just left his position at near-by Pala Properties. They liked the

result and are still at it five decades later!

They couldn't have done it without the support of their wives. We featured Kerith Graeber last year, so this time the spotlight is on Leonard's wife, Linda Dameron. Linda grew up in a collecting family; her mother enjoyed taking Bill Dameron and Linda collecting. Bill is well-known for his Barytes and Smithsonites and often helps at shows and in the Gallery room. Linda is great at setting up our cases and enjoys assisting customers. She is equally happy digging specimens outdoors or in mines.

CONTACT

Website: lhimesfineminerals.com
Phone: 719-359-3076 (Leonard), 760-723-9292 & 619-6021366 (Cal)
Email: leonardhimes@aol.com, cal@calgraeber.com
Instagram: @leonardhimes2019
Facebook: /leonardhimes.1



Silver on Copper - Keweenaw Peninsula, USA



Linda Dameron assisting an appraisal



FLOORPLAN

- 1** COLLECTOR'S EDGE
- 2** DREHER CARVINGS/
TUCSON TODD'S GEMS/
MARY VAN DER AA
- 3** CRYSTAL CLASSICS
- 4** GRAEBER & HIMES
- 5** THE FOCAL CRYSTAL
- 6** NICHOLAS STOLOWITZ FINE MINERALS
- 7** MCP (MINERALOGICAL COLLECTION PROFESSIONALS)
- 8** BLUECAP PRODUCTIONS
- 9** FINE ART MINERALS
- 10** WILENSKY EXQUISITE MINERALS
- 11** MUNSTEINER
- 12** RUDOLPH MINERALS
- 13** HERITAGE AUCTIONS
- 14** EARTH'S NATURAL ART
- 15** AUSROX
- 16** MINERAL MASTERPIECE
- 17** UK MINING VENTURES



Tourmaline with Quartz - Malkhan, Russia, 137mm

GALLERY ⑤



The Focal Crystal is dedicated to helping advanced collectors find the next great rock for their collection.

James and Charelle Webb have been passionate mineral collectors for 15 years, and love to share the world of minerals with other collectors and guests at their home and office.

They have collected various things over the years: cars, coins, art,

wine, but a seemingly innocent trip to the Houston Museum of Natural Science started their love affair with the non-man made beauty found only in nature. Once they saw the divine beauty, color, and shapes in the mineral world, they were hooked.

James and Charelle enjoy telling their guests about minerals and how they can add beauty and intrigue to a home.

The mineral collecting community is about collecting rocks, but also about building interesting relationships and true friendships along with wonderful travel, parties, club meetings and a social world most people don't realize exists.

CONTACT

Website: focalcrystal.com
Phone: 832-259-6496
Email: info@focalcrystal.com
Instagram: [@focalcrystal](https://www.instagram.com/focalcrystal)
Facebook: [/FocalCrystal](https://www.facebook.com/FocalCrystal)



James and Charelle Webb



Peridot - Supat Valley, Pakistan, 5.2cm overall, crystals to 4cm

Malachite
stalactite -
DR Congo



GALLERY 6



Nick Stolowitz developed an interest in minerals at an early age. As a child, he was an avid collector of rocks. This interest evolved over the years into a passion for finding, collecting and selling of minerals to discerning collectors.

Nick continually searches for superior minerals, and takes pride in connecting a passionate collector with an exceptional example of nature's beauty.

His experience in the industry has led



Nick Stolowitz

to opportunities to handle many of the world's premier mineral specimens, allowing him to work closely with many of the top collectors and dealers.

Nick has developed a network that enables Nick Stolowitz Fine Minerals to handle any aspect of the industry, including mine direct sourcing, handling great collections to advising and curating both personal and museum collections.

The criteria used for NSFMM to stand behind a mineral is simple - it must be beautiful. Beauty in a specimen can have many factors and before being comfortable representing a specimen it must pass a test of the most discerning type. A beautiful mineral stirs an emotion. A beautiful mineral causes us to respond from within ourselves.

CONTACT

Website: nsfinminerals.com

Phone: 1-802-233-2703

Email: nick@nsfinminerals.com

Instagram: [@nsfinminerals](https://www.instagram.com/nsfinminerals)



Rhodochrosite with Fluorite - Mexico, 96mm



*Liddicoatite with Albite and
Quartz - Tsarajava mine,
Madagascar, 14cm tall*

GALLERY ⑦



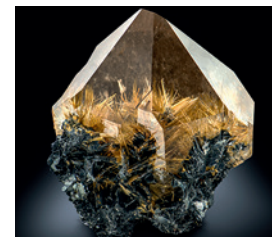
MCP SRL was founded in 2012 by Dr Federico Pezzotta, who had a vision to create a private, professional, internationally recognized mineral specimen preparation laboratory in Europe.

MCP quickly attracted a team of enthusiastic and motivated technicians with scientific, technical, and artistic backgrounds coupled with years of experience in classical and experimental mineral specimen preparation techniques.

MCP is widely recognized as one of the world's most important mineral preparation labs, with over 300 international clients, including collectors, dealers, museums, and mining companies. Tens of thousands of specimens,



Alessandro Paladini & Dr Federico Pezzotta



*Quartz with Rutile and Hematite inclusions -
Novo Horizonte, Brazil, 10cm tall*



*Liddicoatite crystals (major crystal 10cm tall) -
Tsarajava mine, Madagascar*

from old classics to newly discovered pieces and many of the 'icons' of the

mineral world, have been processed by MCP.

In recent years MCP has also greatly developed its commercial sector, spearheaded by Alessandro Paladini. We use our experience to select only the finest and rarest specimens, with a special eye for hidden treasures, buying and selling high quality minerals and mineral rarities from all over the world. Acquisitions include single specimen and collections of local and international interest, as well as individual specimen and lots directly from sources all over the world.

CONTACT

Website: www.mcp-italy.com

Phone: +39 3337 443 966

Email: info@mcp-italy.com

Instagram: @mcp_srl

Facebook: MCP srl



Bryan back home in Honolulu with Waikiki and Diamond Head in the background

GALLERY 8



BlueCap Productions is a full-service, video production company focused on documenting the mineral-collecting world.

As the son of mineral collecting pioneer Edward Swoboda, BlueCap Productions' President Bryan Swoboda grew up surrounded by minerals and mines. From running around underground with candles at the Tourmaline Queen Mine in Pala, California (which is still owned by the Swoboda family) to riding ore

carts up the incline at the Amelia Mine in Santa Rosalia, Mexico, minerals were always in Bryan's life. But more than just the minerals, it was the stories that accompanied the minerals that always fascinated Bryan.

Since 2007, BlueCap Productions has been traveling the world capturing some of the most important mineral stories today. From in-depth video show reports to full-length feature films on different mineral localities to recording the

many presentations going on in the mineral world, BlueCap Productions is dedicated to preserving our mineral legacy for future generations

During the global travel restrictions as a result of the COVID-19 pandemic, Bryan teamed up with Dr. Raquel Alonso-Perez (Harvard Museum) and Dr. Eloïse Gaillou (SMMP) to create the monthly, online talk show *Mineral Talks LIVE* where they interview mineral people from all over the world to teach our community more about who these people are and what they do.

CONTACT

Website: youtube.com/user/bluecapproductions

Phone: (310) 749-8896

Email: bryan@bluecapproductions.com

Instagram: @bluecap_productions

Facebook: /bluecapproductions



Bryan standing in front of BlueCap's Mineral Wings installment at the 2023 TFMG Show



Bryan at an undisclosed location as he prepares for work on a new film about California Gold



Tourmaline with Quartz & Albite -
Paprok, Nuristan, Afghanistan

GALLERY 9



Fine Art Minerals

Discover the captivating world of minerals with Fine Art Minerals, based in the heart of Peshawar, Pakistan, since 1968. Led by the passionate Ghulam Mustafa, our commitment to excellence is well-known, making every customer feel like a part of our extended family.

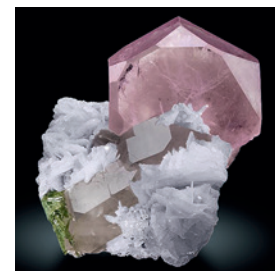
Beyond offering the finest specimens, we share a deep appreciation for the wonders of the mineral realm. Your satisfaction is our top priority, backed by a global 90-day, 100% money-back guarantee for a worry-free experience.

To make your mineral collecting dreams come true, we now provide 0% interest-free finance options, allowing you to spread payments while enjoying the most exquisite pieces.

Our horizons continue to expand as we source the highest quality minerals from around the world. Handpicked treasures are added regularly to our diverse collection, transcending borders and



Ghulam Mustafa, owner of Fine Art Minerals



Morganite with Albite, Quartz & Tourmaline -
Kunar, Afghanistan

mesmerizing collectors.

Our team attends shows around the world including Tucson, Munich, Sainte-Marie, Tokyo and Changsha.

Join us on an extraordinary journey where you'll experience the warmth of our family, the assurance of our guarantee, and the joy of owning world class minerals. Elevate your mineral collecting experience with us!

Come and be a part of the excitement at the TFMG in Tucson - a thrilling mineral extravaganza awaits, and we can't wait to welcome you with open arms!

CONTACT

Website: fineartminerals.com

Phone: +92 346 9191 091

Email: info@fineartminerals.com

Instagram: [@fineartminerals](https://www.instagram.com/fineartminerals)

Facebook: [/fineartminerals](https://www.facebook.com/fineartminerals)



*Amethyst on Quartz -
Jackson Crossroads Amethyst
Mine, Jacksons Crossroads,
Wilkes Co., Georgia, USA*

GALLERY 10

WILENSKY

EXQUISITE MINERALS

If art is an expression of beauty, then the fine minerals at Wilensky Exquisite Minerals are the highest form of aesthetic that nature has to offer.

The universal connection between humans and minerals is our focus. Wilensky offers the world's most stunning minerals, as wonders, as sculptures, as art. The power of these mineral marvels is undeniable. Wilensky caters to all those who embrace their breathtaking presence.

Since 1983, the name Wilensky has become synonymous with the highest levels of mineral collecting.

CONTACT

Website: wilenskyminerals.com

Phone: 646-822-0837

Email:

info@wilenskyminerals.com

Instagram: @wilenskyminerals

Facebook: /wilenskyminerals



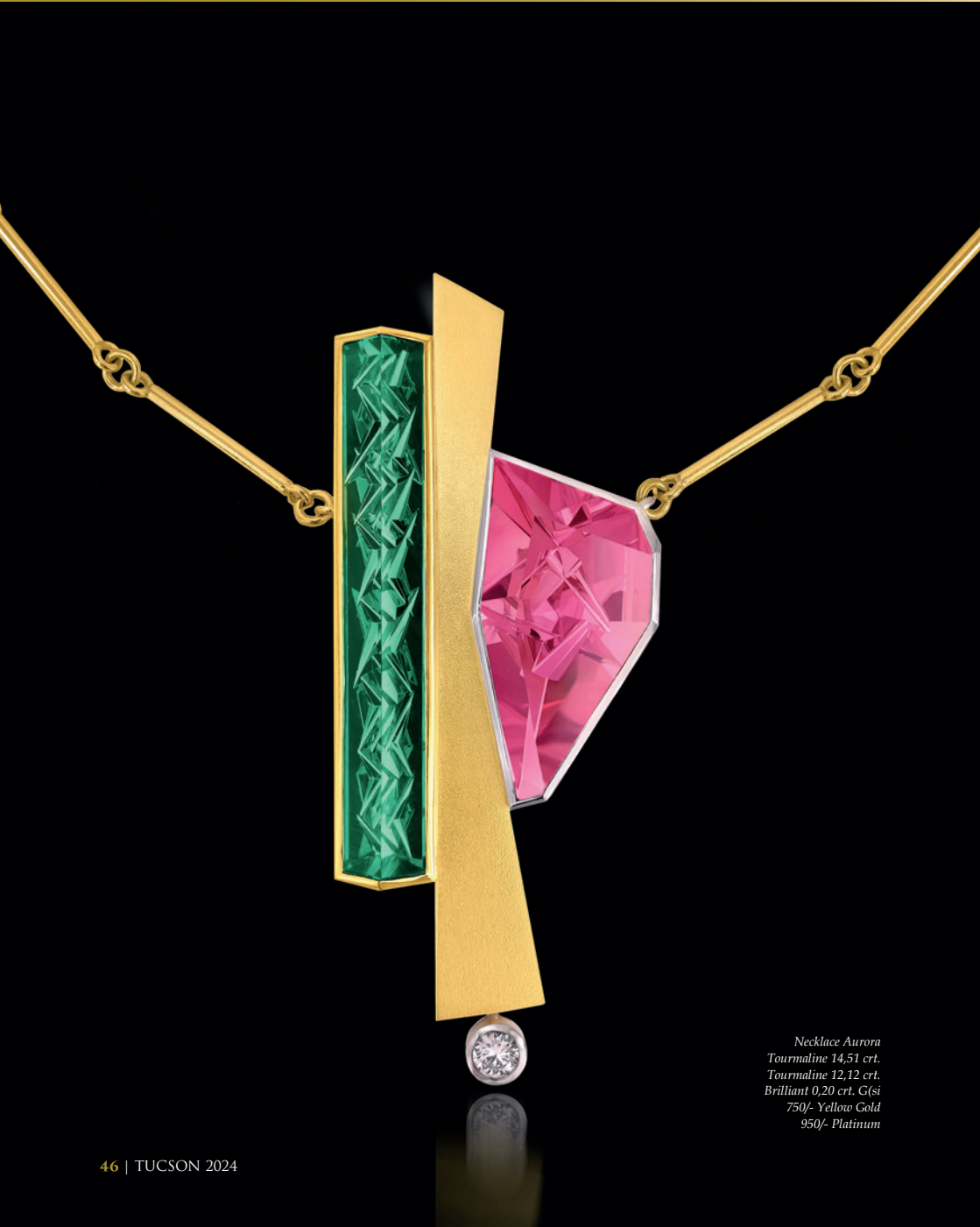
*Emerald in Quartz - Muzo Mine, Muzo,
Boyaca, Colombia*



*Aquamarine on Feldspar - Nyet-Bruk, Shigar
Valley, Skardu District, N Area, Pakistan*

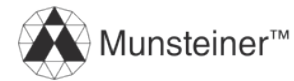


*Rhodochrosite on Quartz and Tetrahedrite - Calcite Pocket, Sweet Home Mine, Alma Mining
District, Park County, Colorado, USA*



Necklace Aurora
Tourmaline 14,51 crt.
Tourmaline 12,12 crt.
Brilliant 0,20 crt. G/si
750/- Yellow Gold
950/- Platinum

GALLERY II



Designing the stone" is the motivating maxim in the Munsteiner studio.

The major focus lies in the modern shaping of diverse gemstones. This has already gained international recognition and won several awards.

Expertly selected minerals are turned into valuable unique objets d'art by means of new cutting styles. Beryl, Tourmaline, Garnet, Amethyst, Citrine, Ametrine, Fire Opal, Rock Crystal and Rutile Quartz are mainly used. Our goldsmiths produce innovative



Tom and Jutta Munsteiner

and unique jewellery in gold and platinum using these cuts.

Bernd Munsteiner was the first contemporary artist to go off in search of the aura of the crystal.

For more than 57 years now, he has been turning transparent stones, in particular, into images, objets d'art and sculptures.



Ring Spirit of Nature
Rutilated Quartz 39,40 crt.
Spirit Sun Spessartine 1,11 crt.
Spirit Sun Spessartine 0,97 crt.
750/- Yellow Gold

Jutta Munsteiner attempts in a very sensitive manner to explore very cautiously the feelings which jewellery could provoke in the sophisticated customer who lives in the present.

Tom Munsteiner's cutting artistry breaks with the traditional concept of the faceted gemstone not only because of the size of the stones used. Instead his work must be interpreted as a creative reflection of the essence of the crystal and his message to the world, which allows a profound insight into the substance of the crystal and reveals its poetic nature.

CONTACT

Website: munsteiner-cut.de
Phone: +496544600
Email: munsteiner@t-online.de
Instagram: @ateliermunsteiner
Facebook: /AtelierMunsteiner



Rose Quartz on Smoky
Quartz - Taquaral, Itinga
Jequitinhonha Valley,
Minas Gerais, Brazil,
16.0 x 9.5 x 9.5 cm

GALLERY 12

RUDOLPH MINERALS

Rudolph Minerals was established in 2020 during the Covid-19 pandemic. Upon going through the Scott Rudolph collection, there were many minerals that were not on display. The collection constantly goes through changes.

Here, our goal is to recirculate many fine specimens back into the collecting community instead of hiding them away in cabinets and drawers. We currently have a year-round location at the Tucson Fine Mineral Gallery and attend shows in Denver, Colorado, Springfield, Massachusetts and Munich, Germany.

We are almost at completion of our private mineral museum located on Long Island, New York. There will be over

35 beautiful cases of specimens on display. If you are planning a trip to New York be sure to set a morning or



Mat Duren, left, and Scott Rudolph, right



Rhodochrosite (scalenohedral) - N'Chwaning II Mine, N'Chwaning Mines, Kuruman, Kalahari manganese field, Northern Cape, South Africa, 6.0 x 4.5 x 2.0 cm

afternoon aside for a visit. We promise it to be memorable experience.

The collection will be open by invitation only so please be sure to stop by our location here at the gallery and speak with Mat Duren our curator.

We love nothing more than to have other collectors come by and peruse shelf after shelf, of some of the worlds finest minerals. Who knows, maybe something will catch your eye. The only feeling better than seeing a mineral that you would like to procure for your collection is when you acquire it. Enjoy.

CONTACT

Website: rudolphminerals.com

Phone: 516-557-3000

Email:

mat.duren@rudolphminerals.com

Instagram: [@rudolphminerals](https://www.instagram.com/rudolphminerals)

Facebook: [/Rudolph-Minerals](https://www.facebook.com/Rudolph-Minerals)
-103374278682360



*Native Sulphur -
Agrigento,
Agrigento Province,
Sicily, Italy*

GALLERY 13

HERITAGE AUCTIONS

Heritage Auctions is the largest auction house founded in the United States, and the world's largest collectibles auctioneer.

Heritage serves more than 40 unique yet complementary genre-specific categories, including coins and currency from the U.S. and around the world, comic art, sports memorabilia, fine art, entertainment, fine jewelry, luxury accessories, real estate, timepieces, historical & Americana, collectible wine and of

course, fine minerals.

We specialize in offering beautiful and aesthetic display specimens of all sizes for the discerning collector. Many of these examples have historic and important provenance, or are exemplary icons of their locality.

Between museum specimens and published examples, the beautiful arrangement of our offerings is only the beginning of their collectability and significance.

Between long-admired

"classics" of the mineral world, to esoteric rarities, Heritage Auctions has a crystalline treasure for collectors of all philosophies and tastes. As collectors themselves, Heritage's team of specialists has created an environment where anyone may participate and experience the joy of buying and selling at auction.

Heritage's Fine Minerals department is led by Director Nic Valenzuela, who is committed to expertly handling the unique specimens sold in its Signature® Showcase auctions that take place year-round.

CONTACT

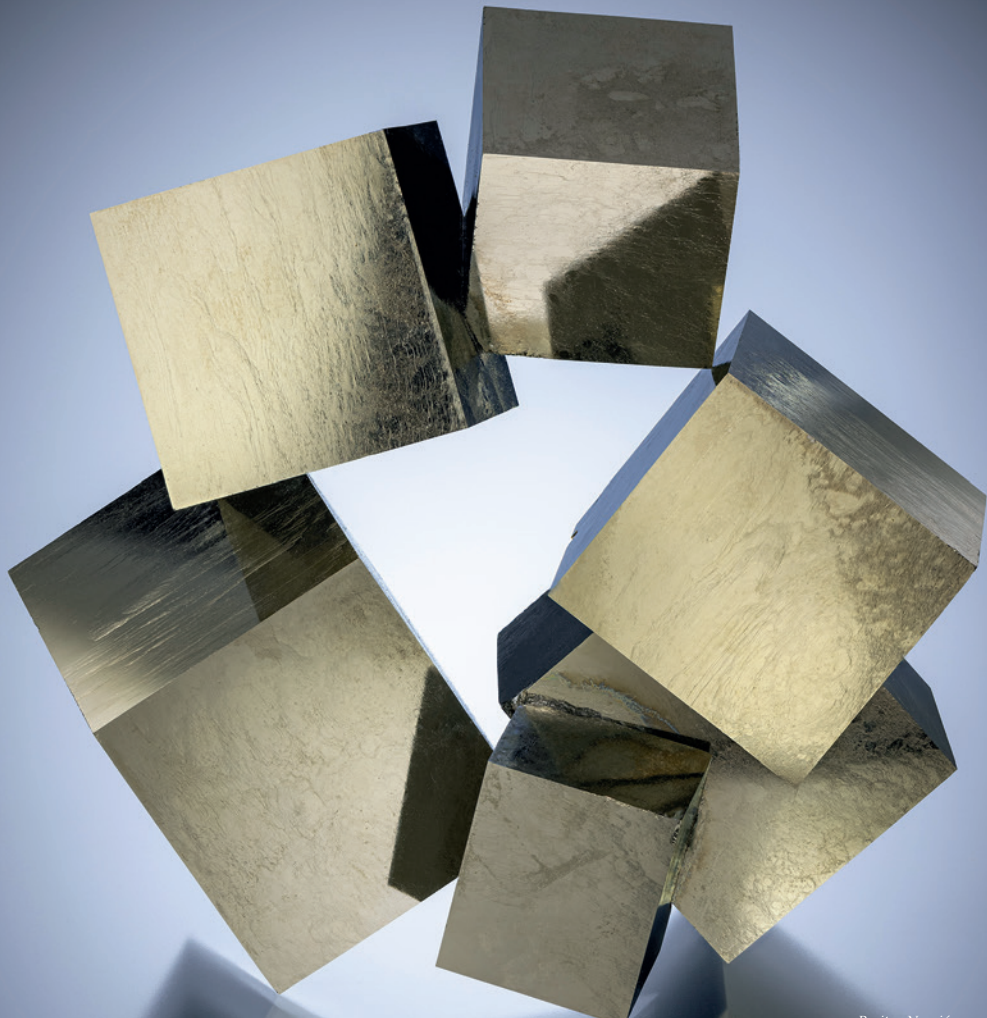
Website: HA.com
Phone: 877-HERITAGE (437-4824) / 214-528-3500
Email: bid@HA.com
Instagram: @heritageauctions
Facebook: /HeritageAuctions



Calcite on Fluorite - Elmwood Mine, USA



Rhodochrosite - N'chwaning Mine, S Africa



*Pyrite - Navajún,
La Rioja, Spain,
80 x 75 x 41 mm*

GALLERY 14

Earth's Natural Art

Earth's Natural Art is a premier mineral store that was established in 2012 with the aim of bringing amazing minerals with great aesthetics to mineral lovers, collectors, and enthusiasts. Our store is dedicated to providing a wide range of fine minerals, carefully selected for their exceptional beauty and rarity.

At Earth's Natural Art, we understand the passion and fascination that people

have for minerals, and we strive to offer a diverse collection that appeals to both seasoned collectors and those just beginning their mineral journey. Our team of experts meticulously curates our inventory, ensuring that every piece we offer meets our stringent quality standards.

In addition to our physical store, we also offer an online platform where customers can

explore our collection, make purchases, and have their chosen minerals shipped directly to their doorstep. We take great care in packaging and shipping to ensure that your precious minerals arrive safely and securely.

Earth's Natural Art is not just a store; it is a destination for mineral enthusiasts to immerse themselves in the world of natural beauty.

With our dedication to quality, knowledge, and customer satisfaction, we have become a trusted name in the mineral community. Visit us at Earth's Natural Art and discover the wonders of the Earth's finest minerals.



Wulfenite with Mimetite - La Morita, Mexico



Daniel Ulibarri, owner of Earth's Natural Art

CONTACT

Phone: (520) 248 2710
Email: geollector@hotmail.com
Instagram: @earthsnaturalart



Gold Wire - Leonora,
Western Australia,
Australia

GALLERY 15

AUSROX

Rob Sielecki graduated with an Honours Degree in Geology in 1980 and worked as a geologist for a number of years.

He started his mineral business in 1984 dealing part time mainly to fund his interest in mineral collecting. Gradually the mineral collecting/dealing took precedence over his geological work - it was just so much more fun!

Ausrox was started by Rob in 1984 and continues to this day as the premier

Australian mineral dealership. Rob has been trading at many of the worlds major mineral shows since 1987 under the Ausrox name.

In 1995 Rob started a wholesale crystal company to capitalise on the burgeoning New Age market. His company Crystal Universe P/L also now trades at many of these shows. Several years ago he set up a specialist gold business with a stockbroker friend -

Andy Comas. This has been going strong as Ausrox Gold.

In the past few years for various legal/administrative reasons he registered an LLC Company in the USA - Ausrox/Crystal Universe LLC which now controls the business in the USA.

The head office and main showroom is in Melbourne, Australia with a second office and gallery in Perth, Western Australia.

Note Rob is also a Government approved valuer for minerals, fossils meteorites and tektites under the Australian Cultural Gifts Program.

CONTACT

Website: ausrox.com.au
Phone: +61 3 9646 1744
Email: rob@crystaluniverse.com.au
Instagram: @ausrox_ausroxgold
Facebook: /ausroxausroxgold



Azurite - Tsumeb Mine, Namibia



Rob Sielecki, Managing Director



*Barite on Calcite -
Elk Creek,
South Dakota,
USA*

GALLERY 16

Mineral Masterpiece

Mineral Masterpiece captures the essence of fine gem and mineral treasures. Thomas Spann has been chronicling some of the world's finest specimens since 2013, and his work can be found in numerous books, periodicals, and all over social media. He has worked on projects with many of the TFMG dealers. Thomas grew up in

Connecticut with a love for the outdoors, but it wasn't until 2008 that his passion for gems and minerals truly ignited. He completed his Graduate Gemologist degree that fall at the Gemological Institute of America.

For the handful of years that followed he managed Mineral Masterpiece, focusing on aesthetic small cabinet and miniature

specimens sold mostly through his website. This honed his photography skills, and before long, he was receiving regular requests to take photographs for people all over the world.

Mineral photography is quite a fascinating process filled with several tensions - it is inherently an artistic endeavor, and each photographer brings a unique vision as they make decisions about angles and emphasis, lighting and background shading. At the same time, it is also a documentary process, creating a record of these natural beauties for generations to come.

CONTACT

Website: mineralmasterpiece.com
Phone: (903) 574-0196
Email: tom@mineralmasterpiece.com
Instagram: @mineralmasterpiece
Facebook: /mineralmasterpiece



*Cuprite on Malachite and Chrysocolla -
Mashamba West, DR Congo*



Pyromorphite - Les Farges, France



Thomas Spann

Fluorite -
The Bull Vein,
Lady Annabella Mine,
Weardale,
Co. Durham,
England



GALLERY 17

UK MINING VENTURES

UK Mining Ventures (UKMV) is the mineral discovery sister company of Crystal Classics. Formed in 2017, the company has been involved in several mining projects. Past projects have included the famous Heliodor and Topaz locality Volodarsk-Volynskii in Ukraine and the Rocklands Copper

mine near Cloncurry in Queensland, Australia.

Ongoing projects are currently concentrated throughout the Weardale valley in County Durham, UK; the Rogerley, Diana Maria and Lady Annabella mines being the only active professional specimen-producing Fluorite mines in Europe.

Fluorite from Weardale is world famous due to

the quality of its crystals; wonderful variations in colour and for its unmistakable daylight fluorescence.

In 2020 our most recent project, the Lady Annabella mine, was ready for production. It has since produced a variety of magnificent, different coloured Fluorites ranging from acidic yellow, forest and emerald green to sky blue and purple, but closed in the summer of 2023.

UK Mining Ventures continues to pursue new localities in and outside the UK for new and exciting finds in the mineral world.

CONTACT

Website: ukminingventures.com

Phone: +44 1935 862 673

Email:

enquiries@ukminingventures.com

Instagram: [@ukminingventures](https://www.instagram.com/ukminingventures)

Facebook: [/ukminingventures](https://www.facebook.com/ukminingventures)



Fluorite - Hidden Forest Pocket, Diana Maria Mine, Weardale, Co. Durham, England



Lady Annabella Mine



Going underground at the Diana Maria Mine



Comesso Fiorentino in Pietre Dure, Topaz from Pakistan

GALLERY INTERIOR



The family-run company Scarpelli continues the ancient art of Florentine mosaic using sliced, polished and shaped hard stone, known as Pietre Dure, following techniques which have been handed down since the Renaissance.

A graduate of the Art Institute of Florence, Master Leonardo Scarpelli now applies his artistry to create contemporary stone-inlay pictures designed for the 21st century. From his pre-drawn design or

picture, Leonardo, cuts and shapes precisely fitting thin slabs of stone, positioned beside one another to create a portrait, still life, landscape, or geometric pattern.

Much of the stone used is collected by the Scarpelli team from all across Italy, examples include Onyx, Chalcedony, Gabbro and Paesina, a variety of landscape limestone found in the Northern Apennine mountains. Other semi-precious stones are imported, such as

Lapis lazuli, Malachite and Labradorite. This extensive range provides a pallet rich in natural hues, colour variations and textures from which the artist skilfully creates a "stone picture" of astonishing realism and beauty.

The company, founded by Master Renzo Scarpelli, is now managed by Catia, his eldest daughter, who handles all aspects of business, communications and corporate image.

The art of Pietre Dure is unique to Florence and Scarpelli Mosaici is proud to preserve and further develop this centuries-old heritage; itself an Italian treasure.

CONTACT

Website: scarpellimosaiici.it
Phone: +39 055 212587
Email: info@scarpellimosaiici.it
Instagram: [@scarpellimosaiici](https://www.instagram.com/scarpellimosaiici)
Facebook: [/lepietrenellarte.scarpellimosaiici](https://www.facebook.com/lepietrenellarte.scarpellimosaiici)



Comesso Fiorentino in Pietre Dure, Table Top Sun and Moon



Catia and Leonardo Scarpelli



THE CRYSTAL COURTYARD



Brother John's Beer, Bourbon & BBQ is an authentic Southwest BBQ culinary journey. Our full-service restaurant, bar & biergarten in the heart of Tucson, Arizona, just north of downtown.

Brother John's takes pride in combining the true art of slow smoked Texas and Carolina style barbeque with a modern twist that pays homage to

the Southwest's heritage.

We are a scratch kitchen, where every dish is crafted from the freshest ingredients including using local partners and locally sourced ingredients as available.

From succulent smoked meats that fall off the bone to zesty chili-infused sauces that awaken your taste buds, our menu showcases the very

essence of Arizona's culinary identity.

Join us and our cozy, rustic ambiance located in an iconic Tucson location that was once the Wildcat House on 1801 N. Stone Ave.

CONTACT

Website: brotherjohnsbbq.com

Phone: (520) 867-6787

Email:

info@brotherjohnsbbq.com

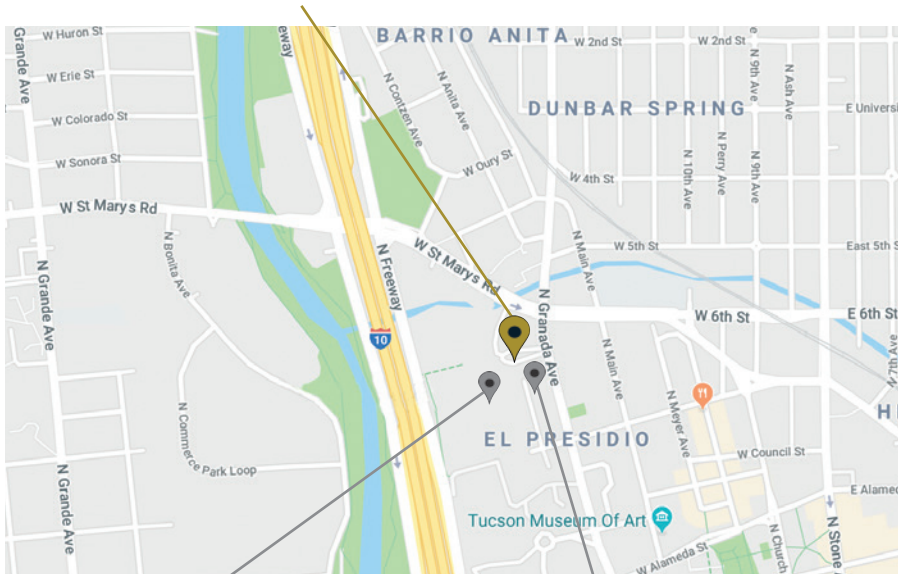
Instagram: [@brotherjohnsbbq](https://www.instagram.com/brotherjohnsbbq)

Facebook: [/BrotherJohnsBBQ](https://www.facebook.com/BrotherJohnsBBQ)



CONTACT

THE TUCSON FINE MINERAL GALLERY
 465 W ST MARYS RD, TUCSON, AZ 85701



HOTEL TUCSON CITY CENTER

FINE MINERALS INTERNATIONAL

 WWW.TUCSONFINEMINERALS.COM

 +1 520 542 3130

 INFO@TUCSONFINEMINERALGALLERY.COM

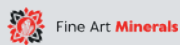
 @TUCSONFINEMINERALGALLERY

AUSROX

HERITAGE
AUCTIONS



Earth's Natural Art



GRAEBER & HIMES



465 W ST MARYS RD, TUCSON, AZ 85701
OPEN ALL YEAR ROUND

WWW.TUCSONFINEMINERALS.COM